

An aerial photograph of a yellow and blue water truck driving on a dirt road. The truck is spraying water from its front and rear, creating a misty trail behind it. The road is flanked by green grass and patches of bare earth. A large blue arrow graphic points to the left, partially overlapping the text.

# PREMIER WATER TANKS

[PREMOTANKS.COM](http://PREMOTANKS.COM)

# TABLE OF CONTENTS

- 1 - ABOUT US
- 2 - WHY US
- 3 - 3 YEAR WARRANTY
- 4 - OUR TANKS
- 5 - PRODUCT SUPPORT
- 6 - SINGLE PIECE SIDEWALL
- 7 - PATENT PENDING
- 8 - BAFFLING SYSTEM
- 9 - SPRAY HEADS
- 10 - NITRO HD CANNON
- 11 - PERMCO
- 12 - BERKELEY
- 13 - TANK CAPACITIES
- 14 - FEATURES & OPTIONS
- 15 - TANK SPECS

**PREMIER**  
WATER TANKS

# ABOUT US

Premier Water Tanks, with over 40 years in the heavy construction equipment industry has acquired Team G Water Trucks, a tried-and-true brand with over 25 years of water tank design and manufacturing. The move to acquire Team G Water Tanks first started over the course of two years when existing relationships recognized the potential in not only the Team G product but also the people behind Team G tanks.

Once discussions turned serious with hints of an acquisition, the process took approximately one full calendar year. The deal was signed on February 15, 2022.

Premier Water Tanks manufactures on-road and off-road water tanks for the heavy construction equipment industry. Premier's mission is to provide a consistent, reliable product that saves our customers money, and continually leads the industry with innovative design and solutions.



# WHY US

## **Industry-leading 3-year Warranty**

Confidence backed by coverage because we built it to last

## **Manufactured in the U.S.A.**

Precision-built with American steel, American labor, and American standards

## **Lowest Center of Gravity in the Industry**

Engineered for superior stability, safer operation, and improved weight distribution on and off road

## **Non-intrusive installation**

Designed to maintain your truck's OEM specifications, intentionally protecting performance, drivability, and long-term resale value.

## **100% pulse welded tanks**

Advanced pulse welding delivers deeper penetration, stronger seams, and increased structural integrity for maximum longevity.

## **Single piece sidewall**

Formed from one solid panel with a welded rub rail for added reinforcement and protection, eliminating center seams and dramatically increasing rigidity

## **Patent pending**

Purpose-built advancements that set Premier apart from the competition.



# 3 YEAR WARRANTY

## INDUSTRY-LEADING 3-YEAR WARRANTY

At Premier Water Tanks, we stand behind what we build. That's why every tank is backed by an industry-leading 3-year, 1500 hour warranty. The strongest commitment you'll find in the market.

This comprehensive coverage includes the tank structure and workmanship giving you confidence long after delivery.

When you invest in Premier, you're investing in durability, performance, and a company that stands behind its product.



Visit our Warranty page at [PremoTanks.com](https://PremoTanks.com) for more warranty resources.

# OUR TANKS

Premier products and steel are of the highest quality at a great price point

Berkeley pumps now standard

Each Tank Spec'd to manufacturer chassis for simple installation

3-4 week build time

12 hour installation time

100% proprietary tank design, unmatched by anyone in the industry.

**NEW DESIGNS, EXCLUSIVE OFFERS, INDUSTRY INSIGHTS.**



**BE THE FIRST TO KNOW, SUBSCRIBE TODAY**

# PRODUCT SUPPORT

**Industry-leading, 3-year warranty**

**Direct relationship with the manufacturers**

**60+ years of construction industry experience**

**25+ years of tank design, manufacturing, and industry solutions**

**Contact product support directly at [PremoTanks.com](http://PremoTanks.com) or speak with your salesperson**



# SINGLE PIECE SIDEWALL

Premier's Single Piece Sidewall starts with one continuous formed steel panel, eliminating the traditional center seam and removing over 300 feet of welding from the tank body. Fewer welds mean fewer stress points, less heat distortion, and greater long-term structural integrity. But that's only part of the story.

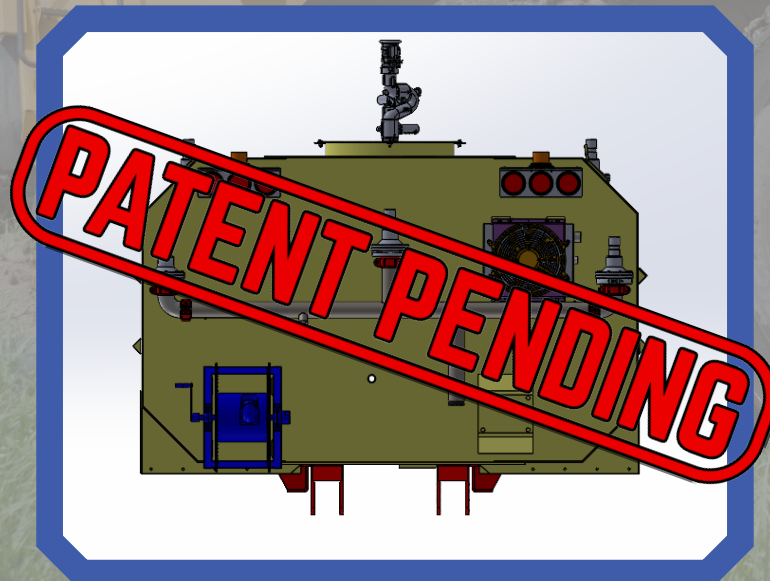
Because we operate our own press brake, we're able to form and weld a single, solid-piece rub rail directly over that sidewall. This isn't pieced-together channel iron. It's one continuous structural member that reinforces the tank's centerline while also acting as impact protection.

The result? We've effectively doubled the rigidity through the tank's midsection while adding an external layer of protection against equipment, material, and real-world abuse.



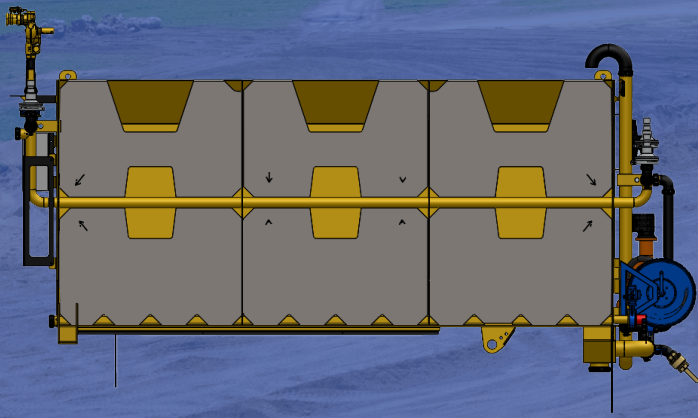
# PATENT PENDING

When stability and safety matter, you need innovation that stands firm. Premier Water Tanks' proprietary design pushes the center of gravity lower than ever. That means superior handling, better performance, and trusted reliability. And now, this game-changing design is officially patent pending. With Premier Water Tanks, you're not just hauling water, you're raising the bar.



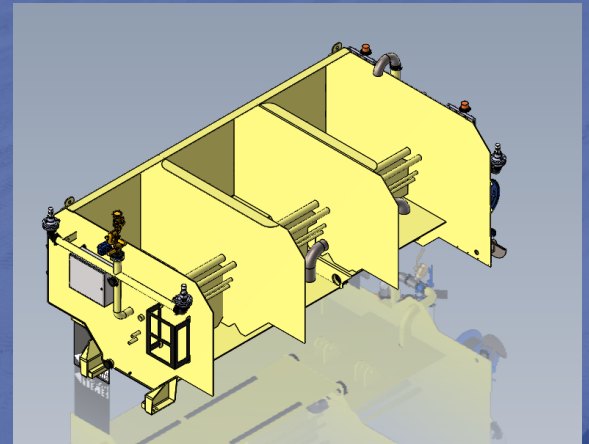
# BAFFLING SYSTEM

ENGINEERED FOR STABILITY.  
DESIGNED FOR CONTROL.  
BUILT FOR THE JOBSITE.



At the core of every Premier Water Tank is a purpose-built internal baffling system designed to control water movement, enhance vehicle stability, and maximize operational safety.

Premier's network of strategically positioned internal baffling compartmentalizes water and restricts the uncontrolled movement of water, commonly known as surge. Without proper baffling, thousands of gallons of water can shift rapidly during acceleration, braking, and cornering, negatively impacting handling, braking distance, and overall vehicle control.



Premier's baffling design incorporates both horizontal and perpendicular internal walls, spanning the distance of each compartment, creating a controlled environment that significantly reduces surge in all directions. This dual-plane configuration delivers balanced load distribution and improved stability whether operating on-road or in demanding off-road environments such as mines, quarries, construction sites, and road projects.

# SPRAY HEADS

Premier's 3" Hydraulic Spray Head is purpose-built for off-road water trucks operating in demanding environments such as mines, quarries, construction sites, and haul roads. Designed with reliability and performance in mind, this lightweight yet durable spray head delivers consistent, high-volume water distribution precisely where dust control is critical.

Powered by a dependable hydraulic system, the Premier spray head ensures smooth, controlled operation with optimal flow management. Its engineered spray pattern maximizes ground coverage while minimizing waste, helping operators maintain safer job sites, improved visibility, and reduced airborne particulates.

Built to withstand rugged conditions, the 3" hydraulic spray head integrates seamlessly with Premier off-road tanks and pump systems, offering dependable performance shift after shift.



# NITRO HD WATER CANNON

## PREMIER'S SEVERE-DUTY STANDARD

The Nitro HD is the monitor we trust when dust control demands strength and precision. Built for mining and heavy construction environments, it features reinforced swivel joints with stainless steel thrust rods and needle roller thrust bearings for long-term durability under continuous operation. High-torque, NEMA 4-rated DC gear motors provide smooth, reliable horizontal and vertical movement, while the 2.5" vaned waterway delivers a powerful, consistent stream with reduced turbulence. It's purpose-built performance that matches the durability standard of every Premier Water Tank.



## SPECIFICATIONS

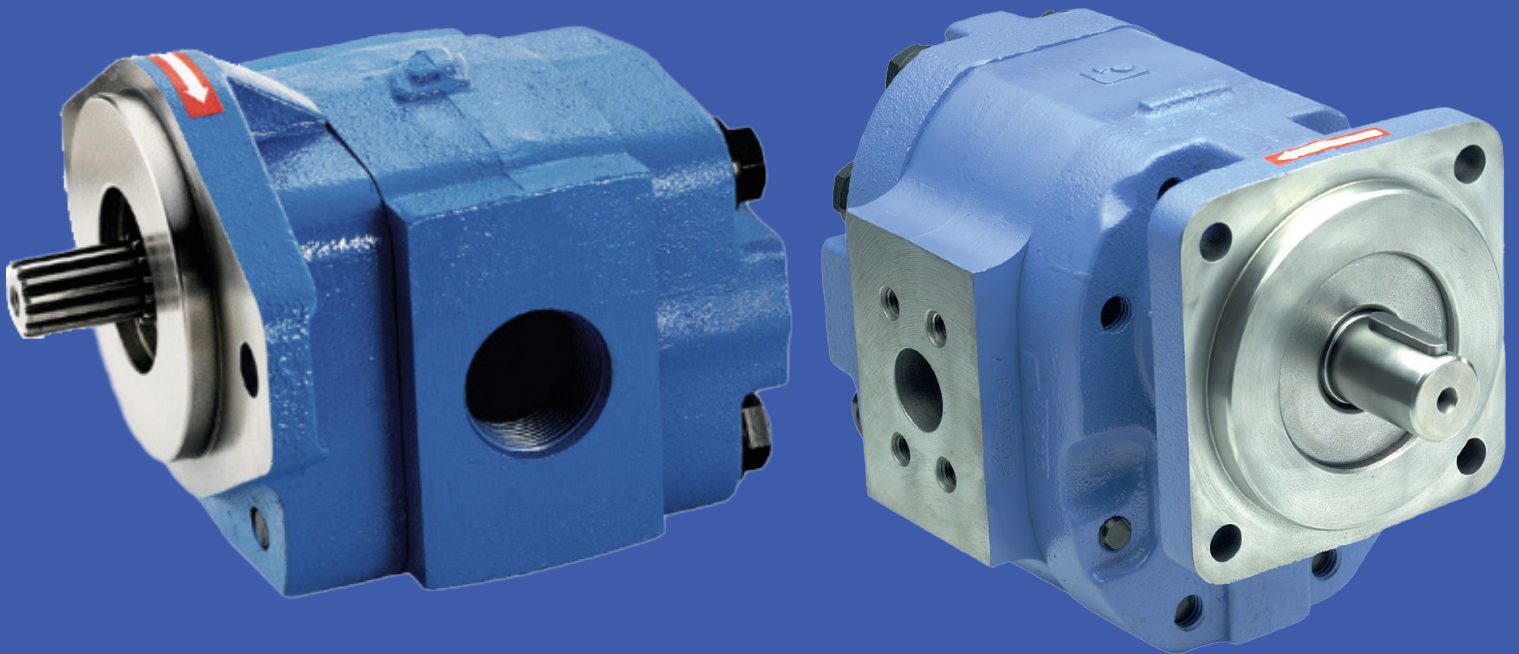
<b>WATERWAY</b>	<b>2.5" VANED DESIGN FOR OPTIMIZED FLOW AND STREAM QUALITY</b>
<b>BASE CONNECTION</b>	<b>2 1/2" FNPT</b>
<b>DISCHARGE CONNECTION</b>	<b>2 1/2" NH MALE THREAD</b>
<b>SWIVEL CONSTRUCTION</b>	<b>STAINLESS STEEL THRUST RODS WITH NEEDLE ROLLER THRUST BEARINGS</b>
<b>DRIVE SYSTEM</b>	<b>PERMANENT MAGNET DC GEAR MOTORS (NEMA 4 RATED)</b>

# PERMCO

## PERMCO HYDRAULIC MOTORS 2100 & 7600 SERIES

Premier Water Tanks relies on Permco 2100 and 7600 Series hydraulic motors to deliver dependable, high-torque performance in demanding jobsite environments. Built with rugged cast-iron construction and engineered for continuous-duty applications, these motors provide the reliability and power our customers expect in dust suppression and water distribution systems.

Permco's long-standing reputation in fluid power, combined with responsive customer support, aligns with Premier's commitment to quality partnerships and long-term serviceability. The result is a proven hydraulic solution that performs when it matters most; keeping your water truck operating efficiently, consistently, and without compromise.



# BERKELEY

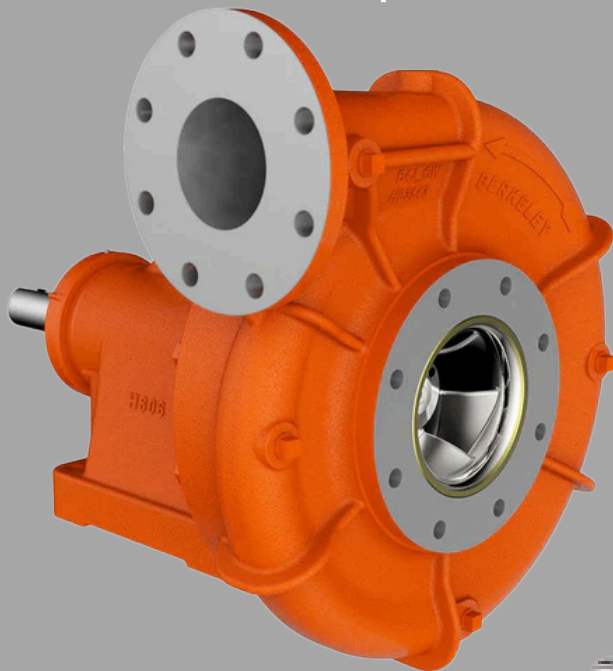
AMERICAN-MADE POWER.

PROVEN PERFORMANCE. BUILT FOR THE JOBSITE.

At Premier Water Tanks, Berkeley pumps are now standard on every off-road tank.

For decades, Berkeley has built a reputation for rugged centrifugal pumps designed to move serious water in demanding environments. That same heavy-duty construction translates seamlessly to dust suppression, water transfer, and jobsite support. Cast-iron housings, precision-balanced impellers, and service-friendly designs deliver consistent flow, dependable pressure, and long-term durability.

When a Premier tank leaves the yard, it's powered by more than just water. It's backed by American manufacturing, proven pump engineering, and a commitment to performance that matches our own.



# TANK CAPACITIES

POWER UNIT	CAPACITY	PREMIER TANK
25 TON	5,000 GALLONS	G5000
30 TON	6,000 GALLONS	G6000
35 TON / 40 TON	8,000 GALLONS	G8000
45 TON	9,000 GALLONS	G9000
PLEASE CALL	10,000K+ GALLONS	***



# FEATURES & OPTIONS

STANDARD FEATURES GUIDE*	G-5000	G-6000	G-8000	G-9000
3-year Warranty	✓	✓	✓	✓
Baffling system	✓	✓	✓	✓
Ladder	✓	✓	✓	✓
Backup Camera, 2010 Power units & Newer	✓	✓	✓	✓
Obstruction free spray controls	✓	✓	✓	✓
Pin Mounting w/milled holes	✓	✓	✓	✓
Electric over hydraulic spray control system	✓	✓	✓	✓
Anti-siphon fill port (4 inches)	✓	✓	✓	✓
Anti-slip walkway w/30" manhole	✓	✓	✓	✓
High-quality exterior paint urethane	✓	✓	✓	✓
Interior tank, two-part marine grade epoxy	✓	✓	✓	✓
Hose reel	✓	✓	✓	✓
3 spray heads, rear spray bar	✓	✓	✓	✓
Vertical Side Spray (adjustment required)	✓	✓	✓	✓
Technical Manuals	✓	✓	✓	✓
Water Cannon	✓	✓	✓	✓
Elkhart, remote control, fog to stream nozzle	✓	✓	✓	✓
Fall Protection Tie-off Points	✓	✓	✓	✓
Hydraulic Oil Cooler	✓	✓	✓	✓

PREMIER OPTIONS GUIDE*	G-5000	G-6000	G-8000	G-9000
Directional Gravity Dump	✓	✓	✓	✓
Factory Installation	✓	✓	✓	✓
Forward Spray Bar	✓	✓	✓	✓
Electric Hose Reel	✓	✓	✓	✓
Ditch Fill / Self Loading	✓	✓	✓	✓

\*Subject to change.

# TANK SPECS

1/4" tank shell walls  
 3/8" tank end walls  
 1/2" baseplate A36 steel with 1/4" baffle system  
 Two part epoxy coated

PREMIER TANK	G5000	G6000	G8000	G9000
LENGTH (UNASSEMBLED)	15'	15'	17'	17'
LENGTH (ASSEMBLED)	18'6"	18'6"	20'6"	20'3"
WIDTH	9'4"	9'9"	11'2"	11'6"
HEIGHT	6'3"	7'2"	7'2"	7'7"
SHIPPING WEIGHT	9,300 LBS	10,700 LBS	14,000 LBS	15,000 LBS



# THANK YOU FOR YOUR BUSINESS

Be the first to know about new designs,  
special discounts and industry insights.  
Subscribe today and live Premier.



You can find more resources  
by scanning this QR code

**352-324-2199**

**INFO@PREMOTANKS.COM**

**PREMOTANKS.COM**